

Corso Italia 13

Property sheet

LIFE IS WHAT **WE** MAKE IT

LOCATION

CBD HISTORIC CENTER

METRO lines

MM3 MISSORI 300m
MM1-MM3/DUOMO 750m
MM4 SANTA SOFIA 400m (end of 2024)
(MM4direct to Linate Airport)

VIABILITY

ACCESSIBLE BY CAR (ZTL Area)



PROPERTY FOCUS

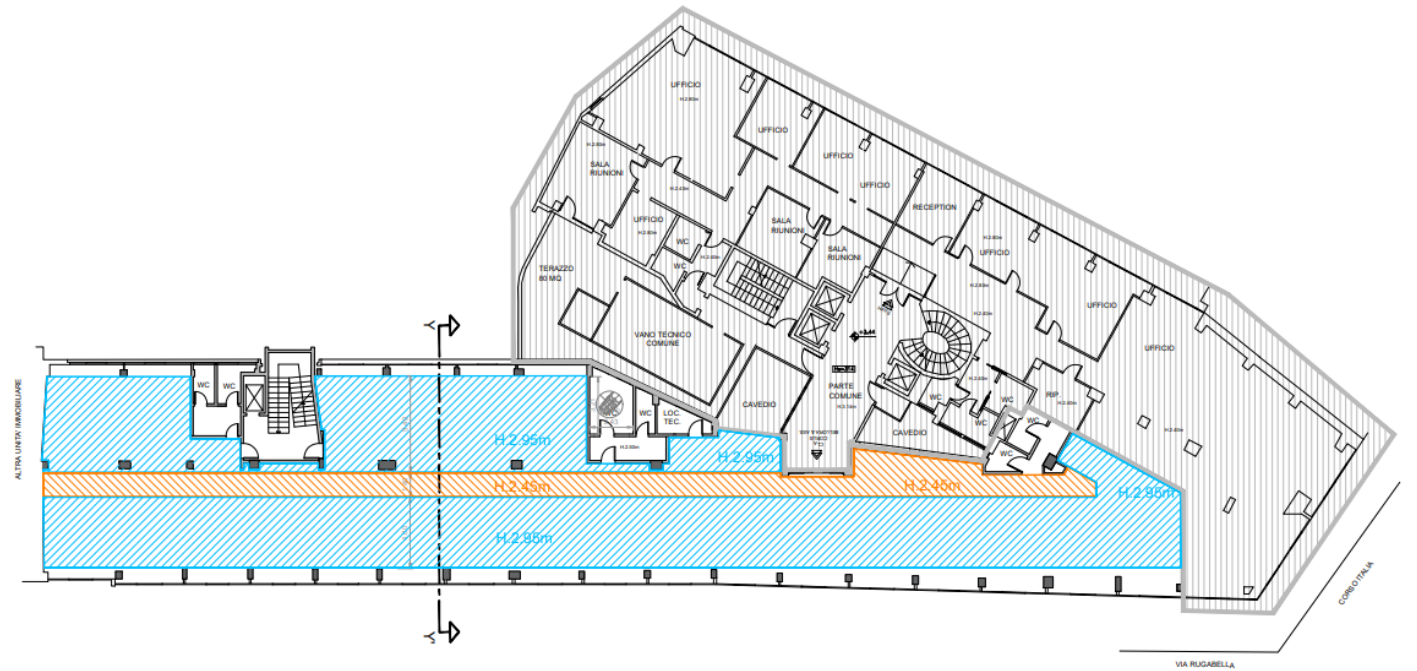
AVAILABILITY

1° floor: 726 sqm

Asking rent: 390 €/sqm/year+ VAT

Delivery date: Immediate

Delivery condition: Cat A



First floor



PROPERTY FOCUS

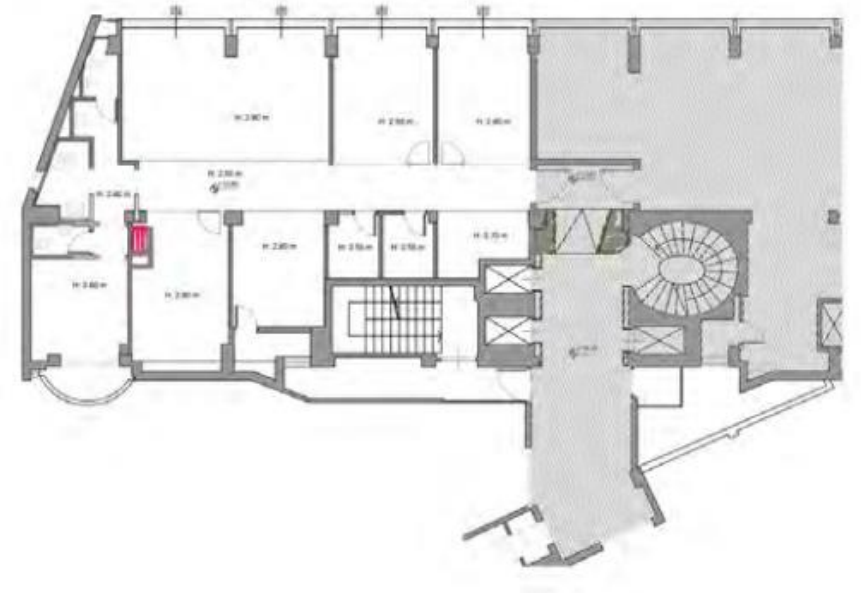
AVAILABILITY

3^o floor: 223 sqm

Asking rent: 390 €/sqm/year+ VAT


Delivery date: Immediate

Delivery condition: Cat B



Third floor





About Cushman & Wakefield

Cushman & Wakefield (NYSE: CWK) is a leading global real estate services firm that delivers exceptional value for real estate occupiers and owners. Cushman & Wakefield is among the largest real estate services firms with approximately 50,000 employees in over 400 offices and approximately 60 countries. In 2021, the firm had revenue of \$9.4 billion across core services of property, facilities and project management, leasing, capital markets, and valuation and other services.

To learn more, visit www.cushmanwakefield.com or follow @CushWake on Twitter.

Copyright ©2024 Cushman & Wakefield. All rights reserved.

